

# NOW SELLING

## 6 Killingworth Road, Higganum, CT



**2,567 SF**

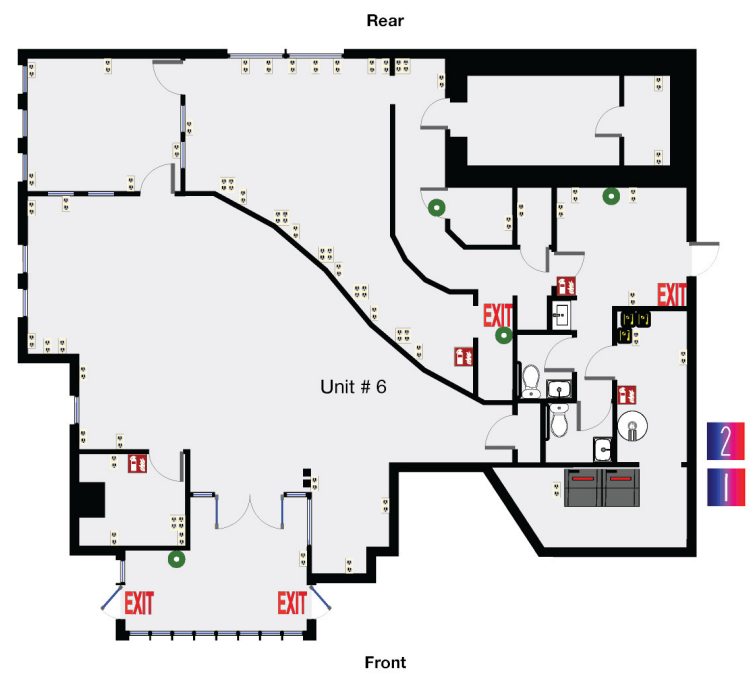
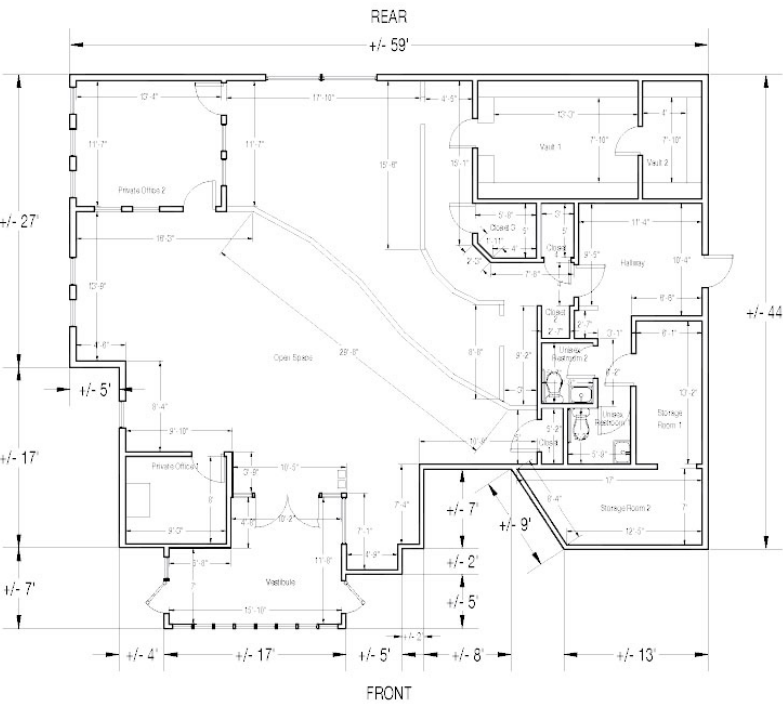
### PROPERTY OVERVIEW

ADDRESS	6 Killingworth Road, Higganum, CT 06441	FEATURES
SELLING	2,567 SF former bank branch	Corner location with excellent visibility
USES	Retail, restaurant, medical or bank	Existing drive-thru window available
PARKING	20+ on-site spaces	Easy access to Route 9 (Exit 9)
ASKING PRICE	Contact exclusive broker	

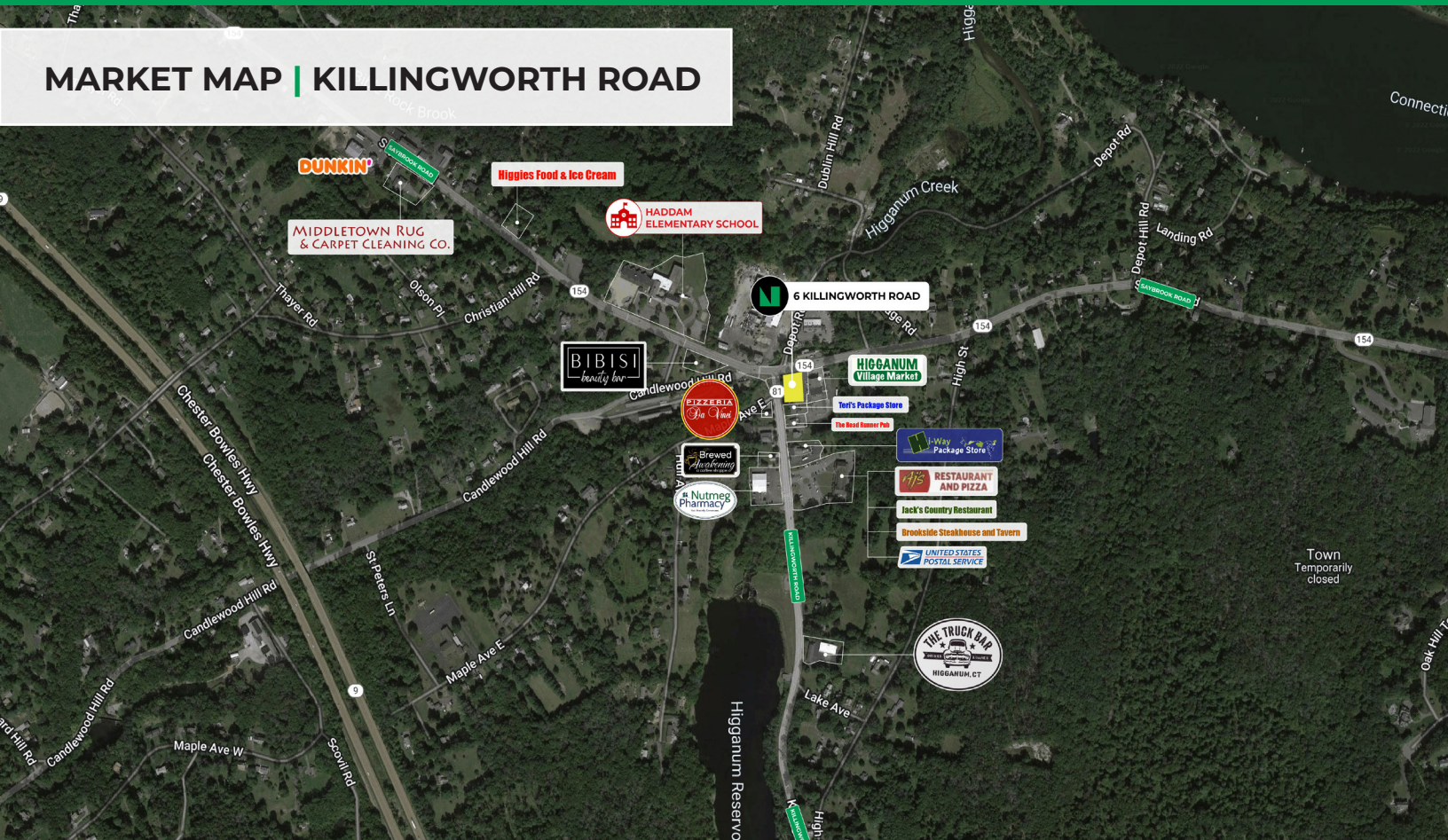
### ABOUT US

New England Retail Properties, Inc. is a full service commercial real estate development and brokerage company specializing in shopping center leasing, development and investment sales.

New England Retail Properties Inc.  
150 Hartford Ave. Wethersfield, CT 06109  
info@newenglandretail.com  
860.529.9000



**MARKET MAP | KILLINGWORTH ROAD**



**DEMOGRAPHICS**

**3 MILES**

**5 MILES**

**10 MILES**

TOTAL POPULATION	4,898	16,120	114,849
TOTAL # OF HOUSEHOLDS	2,028	6,366	46,908
AVG. HOUSEHOLD INCOME	<b>\$129,534</b>	<b>\$127,168</b>	<b>\$115,991</b>

**TRAFFIC COUNTS**

KILLINGWORTH ROAD	3,527 VPD
SAYRBOOK ROAD	5,630 VPD

NO WARRANTY OR REPRESENTATION, EXPRESS OR IMPLIED, IS MADE AS TO THE ACCURACY OF THE INFORMATION CONTAINED HEREIN, AND SAME IS SUBMITTED SUBJECT TO ERRORS, CHANGE OR PRICE, RENTAL OR OTHER CONDITIONS, WITHDRAWAL WITHOUT NOTICE, AND TO ANY SPECIAL LISTING CONDITIONS IMPOSED BY OUR PRINCIPALS.