

NOW LEASING

111 Elm Street (Route 220), Enfield, CT



PROPERTY OVERVIEW | FOR LEASE OR GROUND LEASE

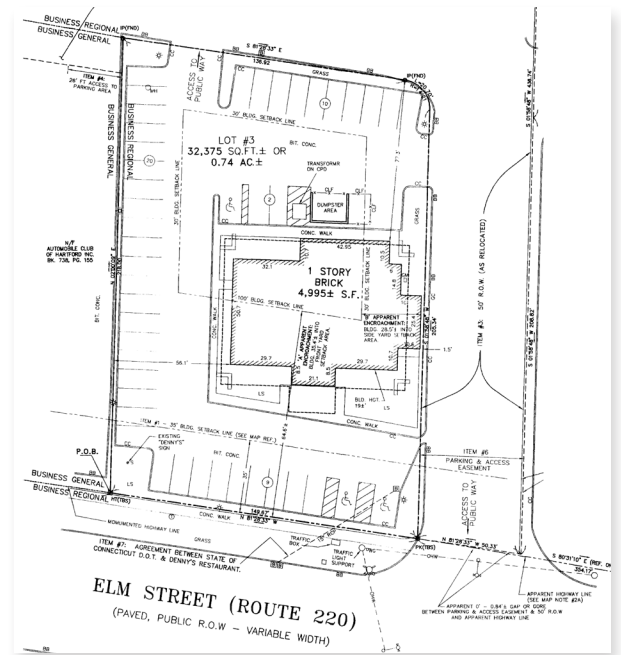
ADDRESS 111 Elm Street (Route 220), Enfield, CT 06082

DETAILS		FEATURES
BUILDING SIZE	4,995 SF	<ul style="list-style-type: none"> • Great visibility from traffic light on Route 220 • High traffic retail corridor with over 27,000 VPD • Easy access to Interstate-91 (Exit 48) • Surrounding tenants include, Starbucks, Kohls, Burger King, Target, Ocean State Job Lot, McDonald's, and many more.
LOT SIZE	0.74 Acres	
PARKING	40 on-site spaces	
TAXES	\$23,060 (annually)	
USE	Retail, restaurant, or medical	

ABOUT US

New England Retail Properties, Inc. is a full service commercial real estate development and brokerage company specializing in shopping center leasing, development and investment sales.

New England Retail Properties Inc.
150 Hartford Ave. Wethersfield, CT 06109
info@newenglandretail.com
860.529.9000







DEMOGRAPHICS REPORT	3 MILES	5 MILES	10 MILES
TOTAL POPULATION	82,719	358,852	716,341
TOTAL # OF HOUSEHOLDS	31,222	139,600	285,946
AVG. HOUSEHOLD INCOME	\$119,600	\$92,456	\$93,464

TRAFFIC COUNTS			
ELM STREET (ROUTE 220)	27,989 VPD	INTERSTATE-91 (EXIT 48)	70,097 VPD

NO WARRANTY OR REPRESENTATION, EXPRESS OR IMPLIED, IS MADE AS TO THE ACCURACY OF THE INFORMATION CONTAINED HEREIN, AND SAME IS SUBMITTED SUBJECT TO ERRORS, CHANGE OR PRICE, RENTAL OR OTHER CONDITIONS, WITHDRAWAL WITHOUT NOTICE, AND TO ANY SPECIAL LISTING CONDITIONS IMPOSED BY OUR PRINCIPALS.

EXCLUSIVE BROKER
 Matt Halprin
 860.529.9000 X 105 | 860.729.6810
 halprinm@newenglandretail.com



Please visit us at www.newenglandretail.com