



New England
Retail Properties, Inc.

NEW DEVELOPMENT COMING SOON



KERRY WOOD

D: 860.529.9000 X 102

kwood@newenglandretail.com

www.newenglandretail.com

The Highrailer

283 Main Street, New Britain, CT 06051

THE HIGHRAILER



'The Highrailer' at 283 Main Street will rise above Central Park alongside its sibling 'The Brit' which broke ground in the autumn of 2021. The Highrailer will feature 114 market-rate studio and 2-bedroom apartment units as well as a total of 6,000 square feet of prime ground-floor retail, and high visibility, corner restaurant space. The restaurant and retail spaces are presently available. Both projects are expected to be complete in the 2023 calendar year.



PROPERTY DETAILS | Now Leasing

AVAILABLE	Up to 6,000 SF
RENTAL RATES	\$25 SF + \$5 SF in taxes, insurance, and CAM
SPACE TYPE	Retail / Medical / Restaurant

TENANT POSSESSION DATE OCTOBER 2023

The building replaces two century-old buildings that housed the former Amato's Toy & Hobby and Liberty Tax retail spaces at the corner of Main St. and Columbus Blvd. They are conveniently located adjacent to the downtown New Britain CT Fastrak station and only a minute drive from Routes 9 & 72.



HIGHWAY ACCESS

Approximately 0.1 miles,
1 minute to Route 9 & 72



DEMOGRAPHICS

Heavily populated area:
+161,000 people within 5 miles



LOCATION

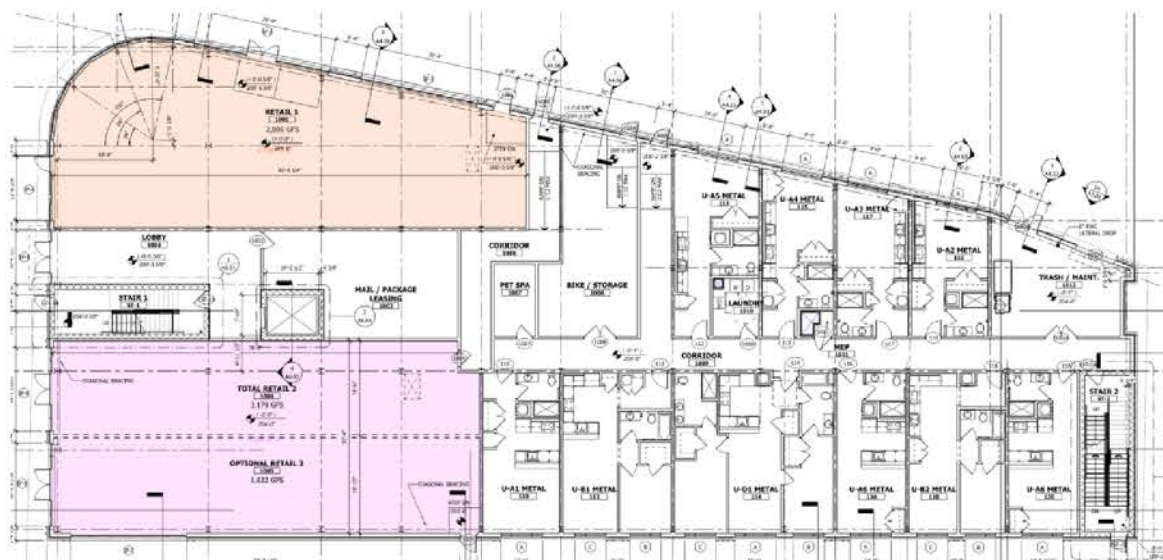
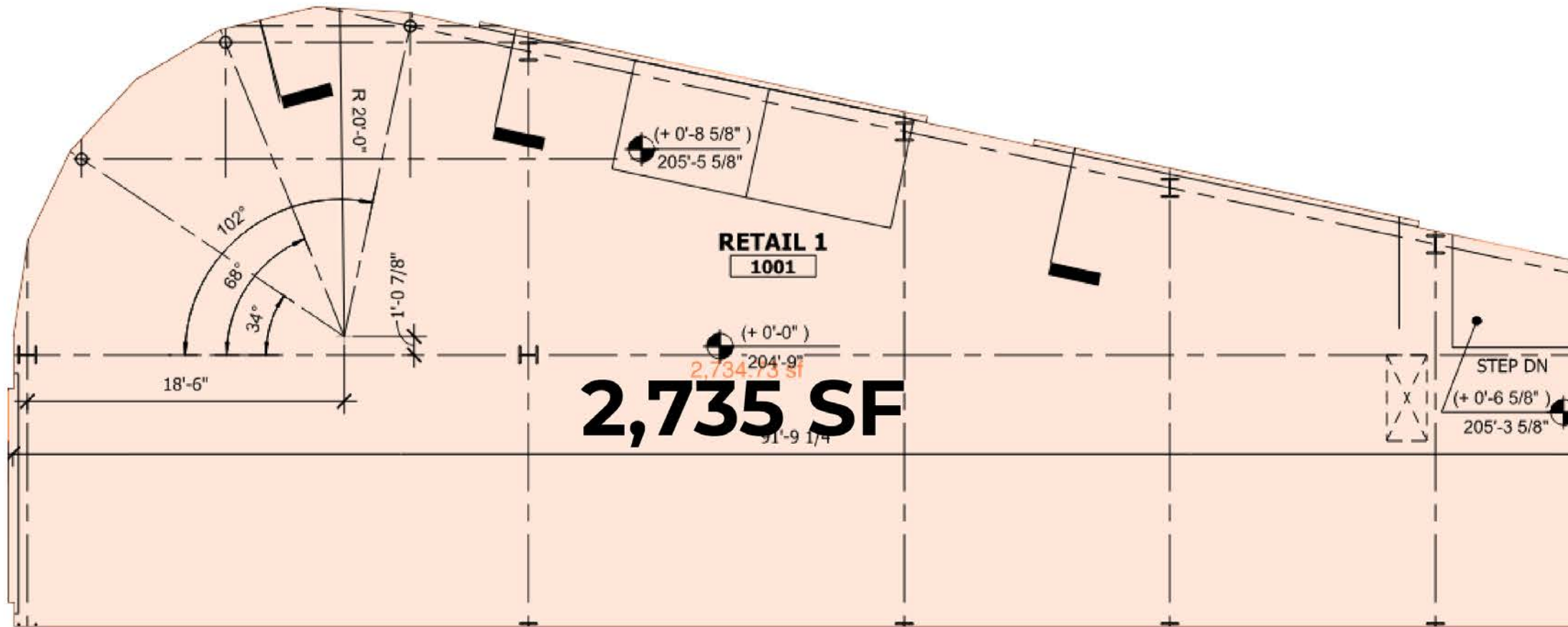
Centrally located in downtown
New Britain, Connecticut

PROPOSED FLOOR PLAN

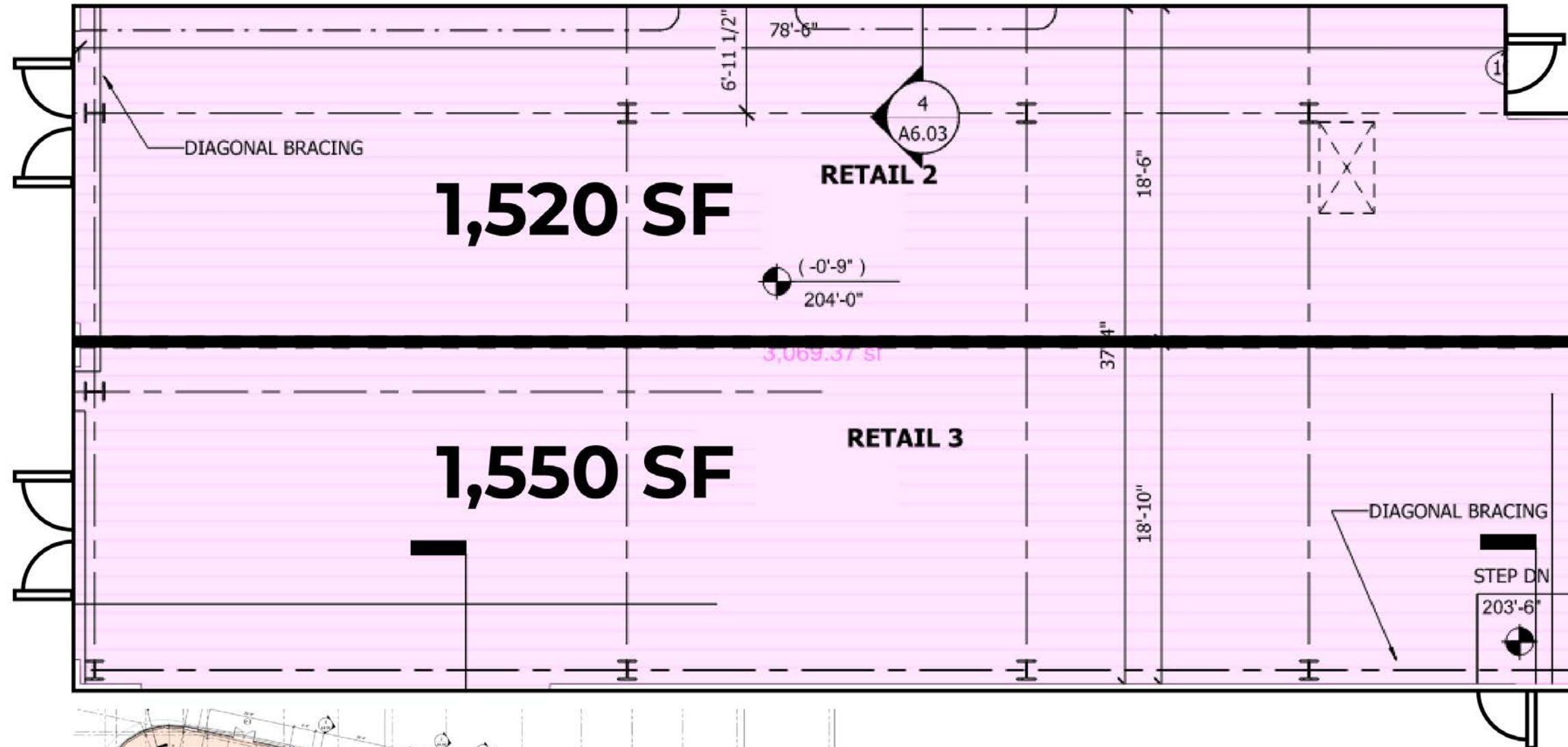


NOW LEASING

RETAIL 1	2,735 SF
-----------------	----------

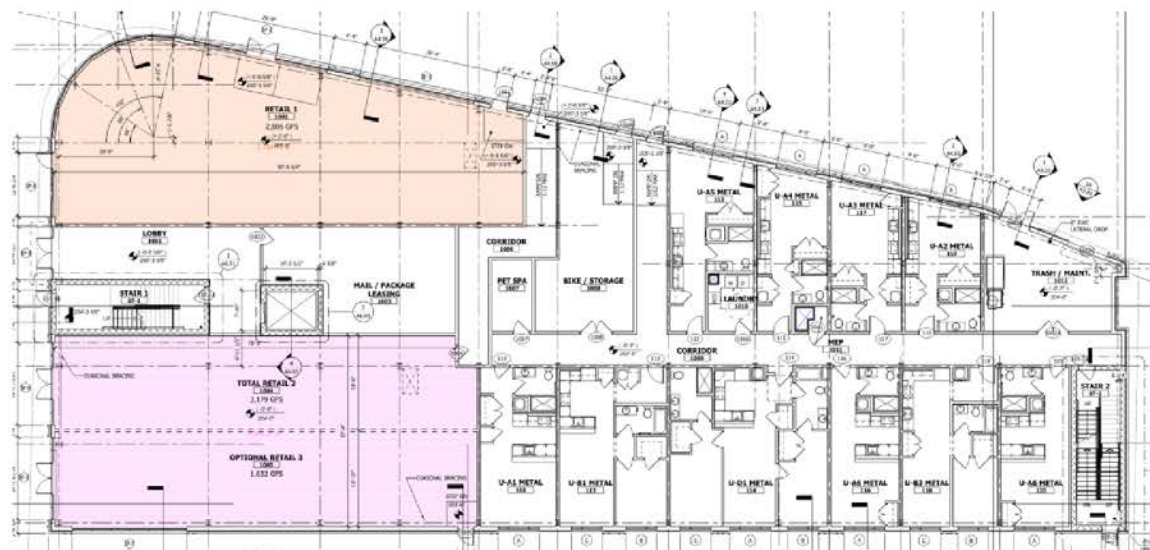


PROPOSED FLOOR PLAN



NOW LEASING

RETAIL 2	1,520 SF
RETAIL 3	1,550 SF





Beeline Trailhead



COURTYARD



HIGHRAILER
MODERN APARTMENTS



NEW BRITAIN
TOWN & CITY CLERK

New Britain
Mayor Office

NEW BRITAIN
BOARD OF ED

NEW BRITAIN
CITY HALL

NEW BRITAIN
INDUSTRIAL MUSEUM

THE Brit

MILEWSKI PARK

New Britain Roundabout

555

BANK ST

COLUMBUS BLVD

COLUMBUS BLVD

COLUMBUS BLVD

COLUMBUS BLVD

BANK ST

Mofongo

THE ASSEMBLY ROOM

CENTRAL PARK

BEACON
PRESCRIPTIONS
The Difference is Caring

Soldiers and
Sailors Monument

PUBLIC PARKING

Red Roof



THE HIGHRAILER

THE ASSEMBLY ROOM

TD Bank



The Hospital of Central Connecticut

Walgreens

FAMILY DOLLAR **EbLens**
Auto Zone **Webster**

Key Food **McDonald's** **planet fitness** **TOWN FAIR TIRE**
Advance Auto Parts **SALLY BEAUTY**
SUBWAY **DUNKIN'** **Rainbow** **TACO BELL**

Planet Fitness

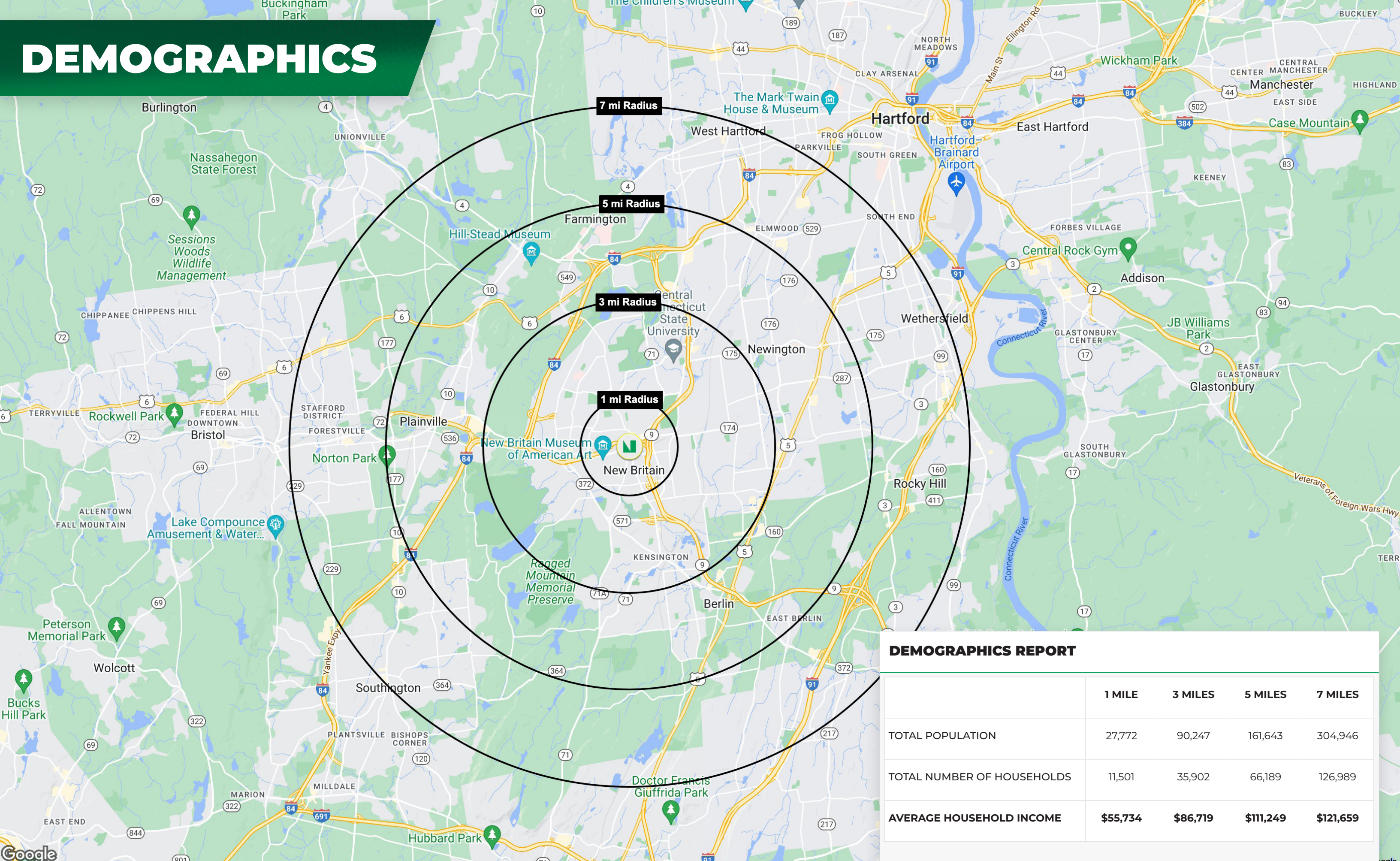
CTfastrak

Price Rite
MARKETPLACE
DOLLAR TREE

CVS **COLUMBUS COMMONS**

TOWN TOWN
Firestone

DEMOGRAPHICS



DEMOGRAPHICS REPORT				
	1 MILE	3 MILES	5 MILES	7 MILES
TOTAL POPULATION	27,772	90,247	161,643	304,946
TOTAL NUMBER OF HOUSEHOLDS	11,501	35,902	66,189	126,989
AVERAGE HOUSEHOLD INCOME	\$55,734	\$86,719	\$111,249	\$121,659



CONTACT

Kerry Wood

D: 860.529.9000 X 102 | C: 203.502.1794

E: kwood@newenglandretail.com

www.newenglandretail.com

 **New England**
Retail Properties, Inc.



NO WARRANTY OR REPRESENTATION, EXPRESSED OR IMPLIED, IS MADE AS TO THE ACCURACY OF THE INFORMATION CONTAINED HEREIN, AND SAME IS SUBMITTED SUBJECT TO ERRORS, CHANGE OR PRICE, RENTAL OR OTHER CONDITIONS, WITHDRAWAL WITHOUT NOTICE, AND TO ANY SPECIAL LISTING CONDITIONS IMPOSED BY OUR PRINCIPALS.