



New England  
Retail Properties, Inc.

# 4,400 SF AVAILABLE FOR LEASE

 **4,400 SF**

**Four Seasons  
Nail Spa**



**KERRY WOOD**

D: 860.529.9000 X 102  
kwood@newenglandretail.com  
www.newenglandretail.com

*Enfield Shops*

841 Enfield Street (Route 5), Enfield, CT



# 841 ENFIELD STREET



The Enfield Shops, located at 841 Enfield Street and across the street from the Enfield Town Hall, is a 7,770 SF building with one remaining space for lease of 4,400 SF. The Enfield Shops is a prime location with high visibility from Enfield Street, which has an average traffic count of over 13,000 vehicles per day. The tenants currently occupying the building are For Seasons Nail Spa and The Shot Spot.

## PROPERTY DETAILS | Now Leasing

<b>AVAILABLE</b>	Up to 4,400 SF in-line space
<b>RENT PRICE</b>	\$28 SF plus NNN (\$6.25 SF)
<b>LOT SIZE</b>	1.33 Acres
<b>PARKING</b>	53 Spaces
<b>USE TYPE</b>	Retail / Medical / Restaurant



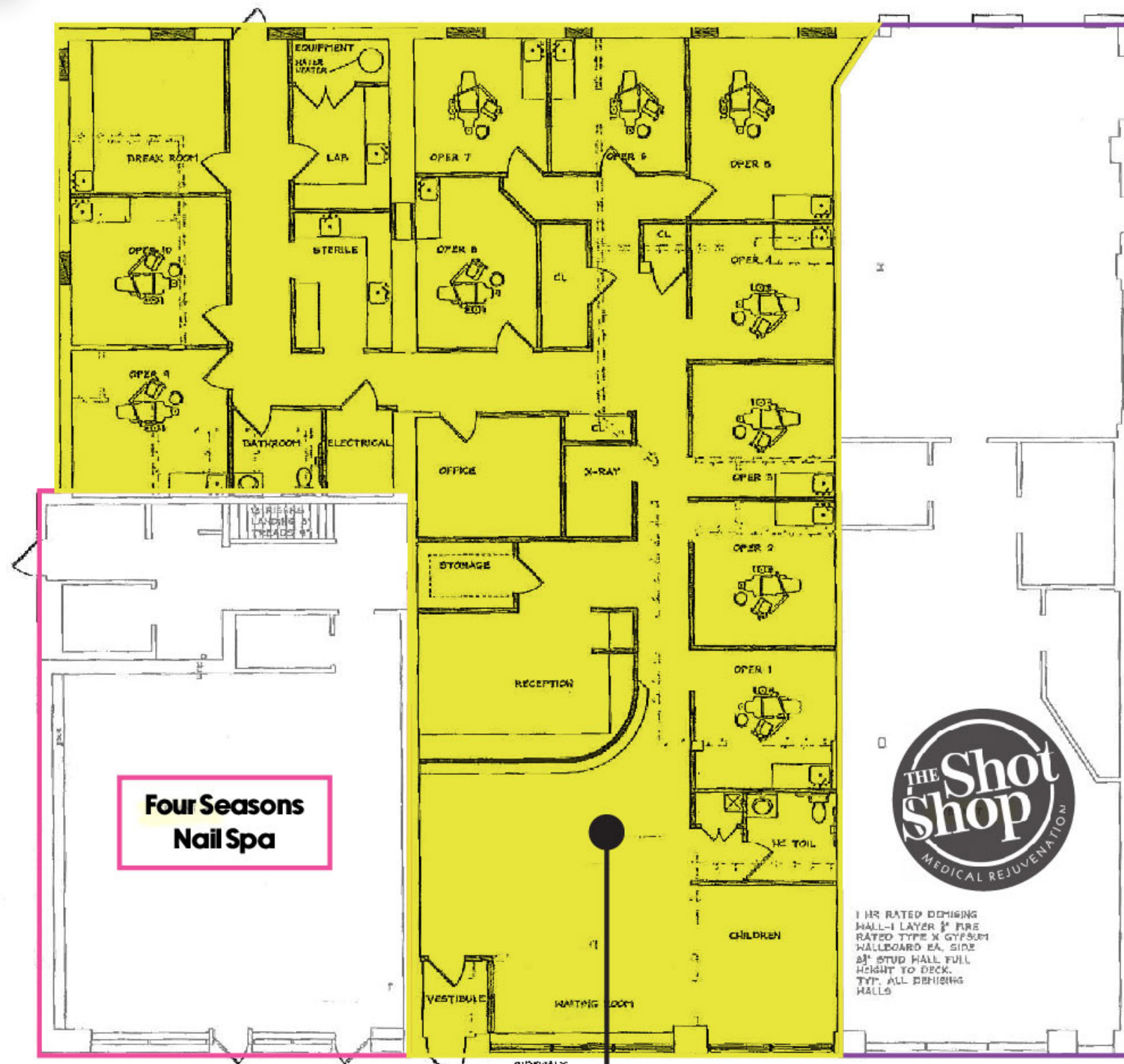
**INTERSTATE 91 HIGHWAY ACCESS**  
Approximately 0.4 miles,  
2 minute to I-91

**DEMOGRAPHICS**  
Heavily populated area:  
+80000 people within 5 miles

**TRAFFIC COUNTS**  
Strong traffic counts +13,000  
vehicles per day on Enfield St.



# FLOOR PLAN



 **4,400 SF**





**TRAFFIC COUNTS (AVERAGE VEHICLES PER DAY)**

ENFIELD STREET (ROUTE 5)	13,157 VPD
ELM STREET	11,518 VPD
INTERSTATE-91 (NORTHBOUND)	38,839 VPD
INTERSTATE-91 (SOUTHBOUND)	42,138 VPD





# ENFIELD SHOPS

ENFIELD TOWN HALL

M&T Bank  
Trinity Health

ENFIELD SQUARE  
Target, Claire's, Wendy's, Friendly's, GameStop, T-Mobile, Starbucks, LensCrafters, Mobil, Bath & Body Works

petco, Marshalls, DSW, Moe's, ALDI, Home Sense, Jersey Mike's, Olive Garden, Chick-fil-A, Old Navy, Red Robin, Michaels, Barnes & Noble, AAA, Five Below, LensCrafters, Starbucks, Ulta Beauty

ShopRite, Burlington, Taco Bell, McDonald's, T.J. Maxx, d'angelo, Dunkin'

Kohl's, Sally Beauty, Famous Footwear, Dunkin', Job Lot, Chicago Arms, Public Storage, The Vitamin Shoppe, Starbucks, Burger King, McDonald's, Golden Nozzle Car Wash

Leslie's, Burger King, McNally Brothers, Blush, Advanced Orthopedics New England

Firestone, Town Fair Tire, Midas, United States Postal Service

Lia Volkswagen of Enfield, Lia Hyundai, Lia Honda, Lia Nissan of Enfield, Gale Toyota

The Home Depot, Costco Wholesale, PC Richard & Son, Dick's Sporting Goods, FRIDAYS, Panera, My Gym, Joann, Auto Zone, Dollar Tree

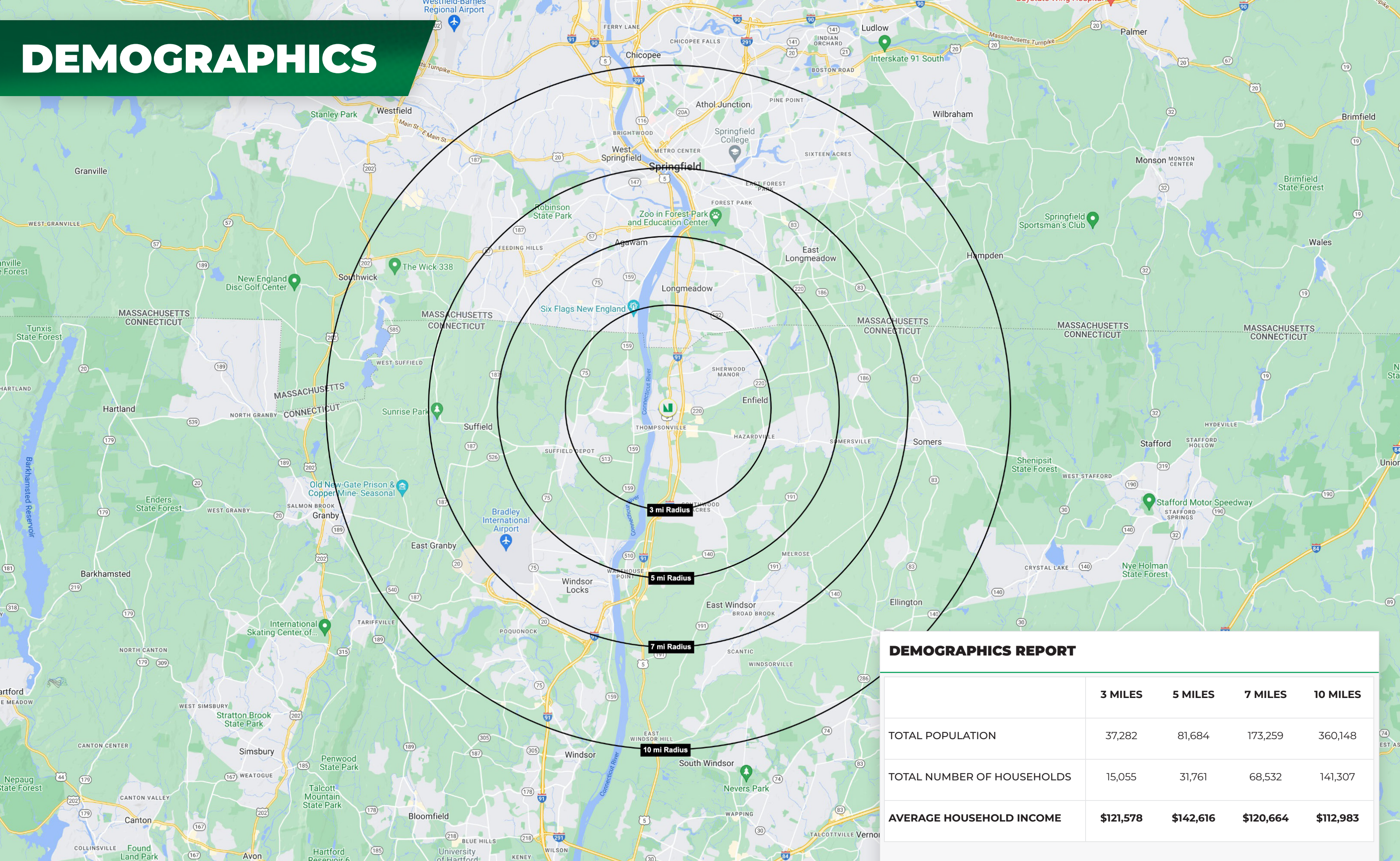
Big Y, TSC Tractor Supply Co, Walgreens, Goodwill, Westfield Bank, WoodTap

KeyBank, CVS, Hot Table, Family Ford, M&T Bank, PhysicianOne Urgent Care, Sherwin-Williams

Stop & Shop, Ninety Nine, UPS, Advance Auto Parts



# DEMOGRAPHICS



DEMOGRAPHICS REPORT				
	3 MILES	5 MILES	7 MILES	10 MILES
TOTAL POPULATION	37,282	81,684	173,259	360,148
TOTAL NUMBER OF HOUSEHOLDS	15,055	31,761	68,532	141,307
AVERAGE HOUSEHOLD INCOME	\$121,578	\$142,616	\$120,664	\$112,983



 **4,400 SF**

**Four Seasons  
Nail Spa**



**CONTACT**

Kerry Wood  
D: 860.529.9000 X 102 | C: 203.502.1794  
E: [kwood@newenglandretail.com](mailto:kwood@newenglandretail.com)  
[www.newenglandretail.com](http://www.newenglandretail.com)

 **New England**  
Retail Properties, Inc.



NO WARRANTY OR REPRESENTATION, EXPRESSED OR IMPLIED, IS MADE AS TO THE ACCURACY OF THE INFORMATION CONTAINED HEREIN, AND SAME IS SUBMITTED SUBJECT TO ERRORS, CHANGE OR PRICE, RENTAL OR OTHER CONDITIONS, WITHDRAWAL WITHOUT NOTICE, AND TO ANY SPECIAL LISTING CONDITIONS IMPOSED BY OUR PRINCIPALS.