

NOW LEASING

1298 Silas Deane Highway (Route 99), Wethersfield, CT



PROPERTY OVERVIEW | FOR LEASE OR GROUND LEASE

ADDRESS 1298 Silas Deane Highway (Route 99), Wethersfield, CT 06109

DETAILS

BUILDING SIZE	5,660 SF
LOT SIZE	1.1 Acres
PARKING	73 on-site spaces
TAXES	\$25,422 (annually)
USE	Retail, restaurant, or medical

FEATURES

- Great visibility from the Silas Deane Hwy
- High traffic retail corridor with over 20,000 VPD
- Easy access to Interstate-91 (Exit 24)
- Surrounding tenants include, Hartford Health Care, Stop & Shop, Walmart, Planet Fitness, Buffalo Wild Wings, Red Lobster, and many more.

ABOUT US

New England Retail Properties, Inc. is a full service commercial real estate development and brokerage company specializing in shopping center leasing, development and investment sales.

New England Retail Properties Inc.
150 Hartford Ave. Wethersfield, CT 06109
info@newenglandretail.com
860.529.9000

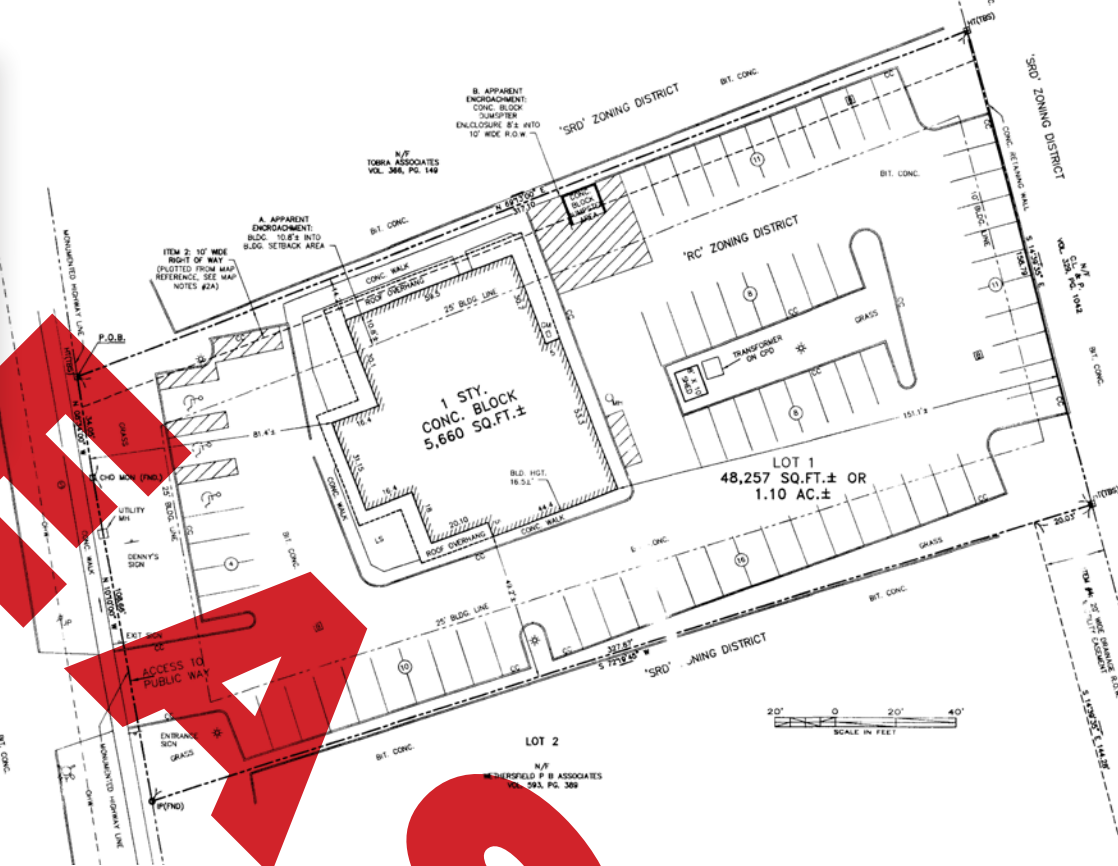


EXCLUSIVE BROKER

Matt Halprin
860.529.9000 X 105 | 860.729.6810
halprinm@newenglandretail.com



Please visit us at www.newenglandretail.com



EXCLUSIVE BROKER
Matt Halprin
860.529.0000 X 105 | 860.729.6810
halprinm@newenglandretail.com



Please visit us at www.newenglandretail.com



EXCLUSIVE BROKER

Matt Halprin
860.529.9000 X 105 | 860.729.6810
halprinm@newenglandretail.com



Please visit us at www.newenglandretail.com



DEMOGRAPHICS REPORT	3 MILES	5 MILES	10 MILES
TOTAL POPULATION	45,818	159,932	576,528
TOTAL # OF HOUSEHOLDS	19,348	64,269	232,488
AVG. HOUSEHOLD INCOME	\$113,911	\$97,622	\$95,476
TRAFFIC COUNTS			
SILAS DEANE HIGHWAY	20,874 VPD	INTERSTATE-91 (EXIT 24)	136,905 VPD

NO WARRANTY OR REPRESENTATION, EXPRESS OR IMPLIED, IS MADE AS TO THE ACCURACY OF THE INFORMATION CONTAINED HEREIN, AND SAME IS SUBMITTED SUBJECT TO ERRORS, CHANGE OR PRICE, RENTAL OR OTHER CONDITIONS, WITHDRAWAL WITHOUT NOTICE, AND TO ANY SPECIAL LISTING CONDITIONS IMPOSED BY OUR PRINCIPALS.